



2 Bedrooms | 1 Bathrooms | 1 Reception Rooms

Ashurst Road | Tadworth | KT20 5ET

**Guide price £525,000**

LOFT



Ashurst Road |  
Tadworth | KT20 5ET  
Guide price £525,000

- Charming 2 bedroom cottage with large driveway
- Beautifully presented throughout
- Modern four piece bathroom with luxury roll top bath
- Large south west facing rear garden
- Potential to extend (STPP)
- Only 0.3 miles to Tadworth Train Station, shops and local amenities

## Ground Floor

### Hallway

### Reception Room

25'0 x 12'4 (7.62m x 3.76m)

### Kitchen

8'7 x 7'9 (2.62m x 2.36m)

## First Floor

### Landing

### Bedroom 1

15'0 x 12'8 (4.57m x 3.86m)

### Bedroom 2

10'8 x 9'7 (3.25m x 2.92m)

### Bathroom

### Outside

### Driveway

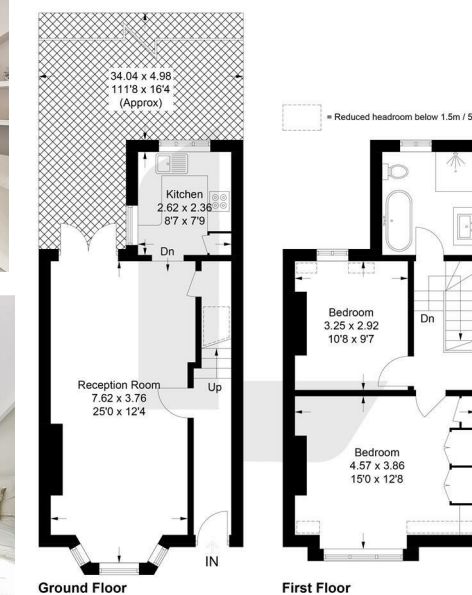
### Rear Garden

111'8 x 16'4 (34.04m x 4.98m)



## Ashurst Road, KT20

Approximate Gross Internal Area = 78.1 sq m / 841 sq ft



This plan is for layout guidance only. Not drawn to scale unless stated. Windows and door openings are approximate. Whilst every care is taken in the preparation of this plan, please check all dimensions, shapes and compass bearings before making any decisions reliant upon them. (D1264309)



EPC Rating: C

23a High Street  
Purley  
Surrey  
CR8 2AF  
0208 660 8070  
hello@loft-estates.co.uk